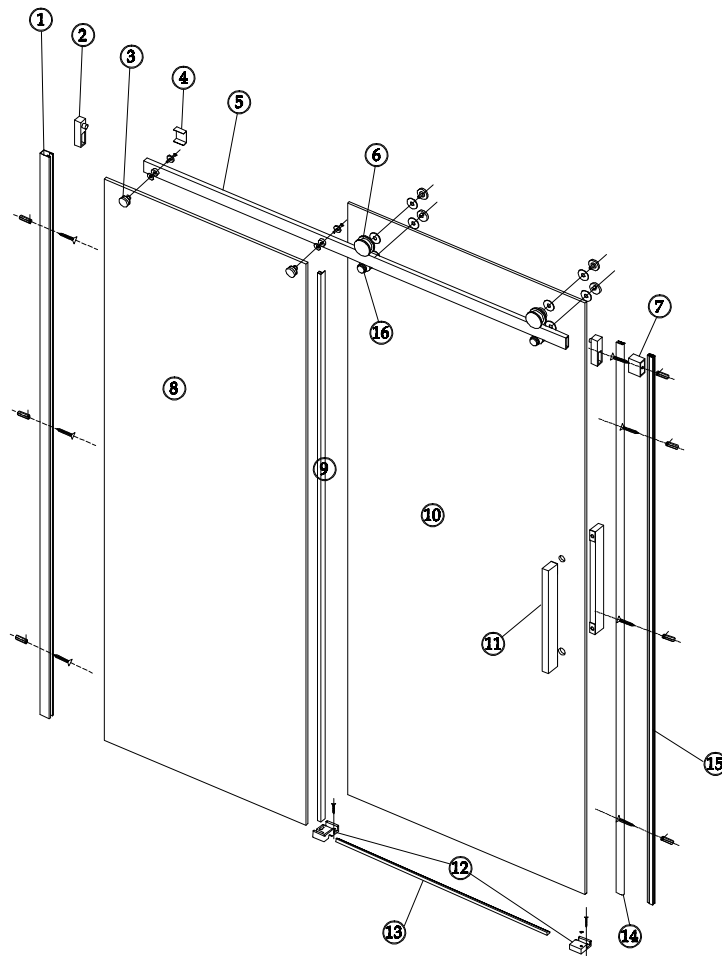
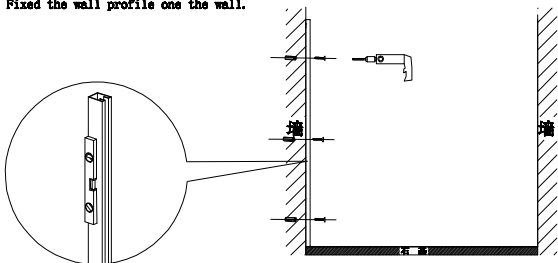


200.904

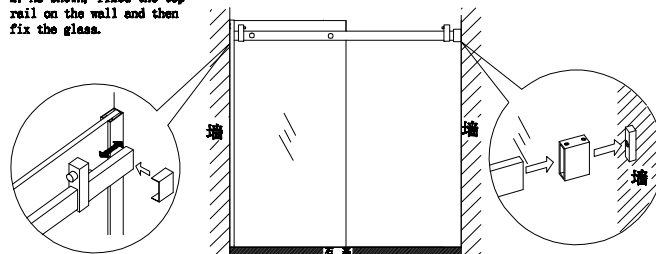
| | |
|---|---------------------------|
| ① | wall profile |
| ② | fixed panel screw |
| ③ | small fixed panel bracket |
| ④ | track decorative cover |
| ⑤ | upper guide rail |
| ⑥ | wheels |
| ⑦ | corner sleeve |
| ⑧ | fixed panel |
| ⑨ | F rubber |
| ⑩ | Sliding door |
| ⑪ | handle |
| ⑫ | guide block |
| ⑬ | anti-water strip |
| ⑭ | magnetic stripe |
| ⑮ | magnetic stripe profile |
| ⑯ | antiskid |
| ⑰ | |
| ⑱ | |
| ⑲ | |
| ⑳ | |
| ㉑ | |
| ㉒ | |
| ㉓ | |
| ㉔ | |
| ㉕ | |



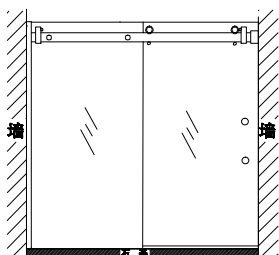
1: Fixed the wall profile one the wall.



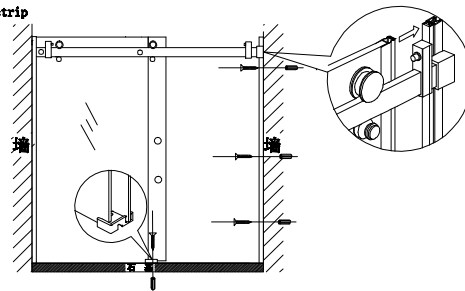
2: As shown, fixed the top rail on the wall and then fix the glass.



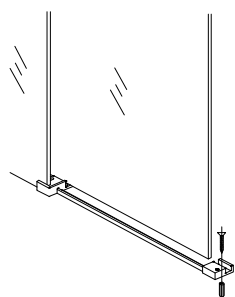
3: Fixed the moving door with wheels.



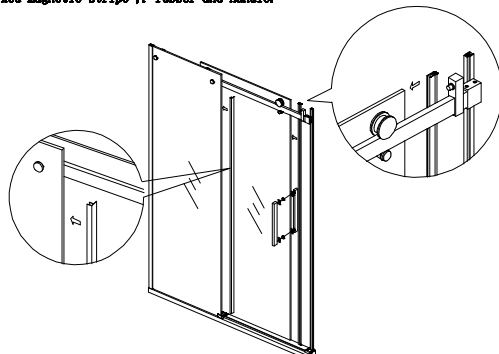
4: Fixed the anti-water strip



5: As shown like drawings



6: Fixed magnetic stripes ,F-rubber and handle.



7: Apply silicone sealant to all joints between fixed glass panel, wall profile and anti-water strip on the base. Don't use the enclosure for 24 hours, to allow the silicone to dry completely.

